



Your **Complete** Studying **Guide**

FREE*
ENGLISH
TEST PREP

FREE*
COUNSELING
Since 1991

250K
SUCCESS STORIES

950+
UNIVERSITIES

20+
DESTINATIONS

100K
COURSES

20+
CR. SCHOLARSHIPS

24
BRANCHES



+91 8600911333 | www.edwiseinternational.com

ABOUT US

With over **34 years of experience**, we are one of **India's leading overseas education consultants**, partnering with **950+ globally recognised universities** across top destinations like the UK, USA, Canada, Australia, New Zealand, Singapore, Ireland, France, Germany, Switzerland, the UAE, Spain, Malaysia, Mauritius, India, the Netherlands, Italy and many more.

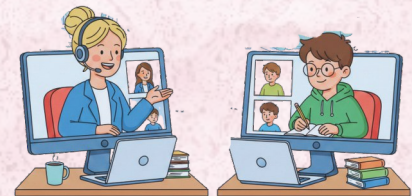
FREE EXPERT COUNSELLING & COURSE SELECTION

- Personalised, unbiased guidance on country, university & course selection.
- Conducted interviews & Meet with with University Representatives.
- Over 90% of our students are referrals from satisfied families.
- No hidden charges or false promises.
- Our counsellors are trained directly by the university.



VIRTUAL & LIVE SUPPORT

- Instant virtual counselling – No scheduling needed.
- One-on-one expert guidance – Real-time, personal interaction.
- Web & Mobile Support – Connect anytime, from anywhere.



ADMISSION FORMALITIES

- Complete support for applications with strong recommendations.
- Application fee waivers.
- Holistic review to avoid errors. We also help refine your SOP & LOR.
- University shortlisting and scholarship guidance provided.
- Coaching for TOEFL, PTE, IELTS, GRE, GMAT, SAT and Duolingo along with digital training modules.
- FREE English Test Prep Scheme* available.

VISA & PRE-DEPARTURE ASSISTANCE

- Up-to-date visa guidance and documentation support.
- Financial document review from trained accountants.
- Pre-departure orientations and alumni interaction.
- Country-specific support across 20+ global destinations.

BANK LOAN ASSISTANCE

- Attractive interest rates from 8%–13% with multiple ROI options.
- Secured loans up to ₹5 Crores (university & bank dependent). Unsecured loans up to ₹1.25 Crore.
- Pre-approved offers from IDFC, ICICI, and other top institutions.
- Covers tuition, living expenses, laptops, flights & more.
- Pre-Visa Disbursal available.
- Preferential forex rates for fee payments.
- Minimal & transparent processing fees.



ADDITIONAL STUDENT SERVICES

- Academic Pathway Planning, interest, career & aptitude testing
- Accommodation assistance (on-campus, off-campus & student housing)
- Forex/travel currency cards, flight tickets, discounts on airfares & extra luggage
- Student travel & medical insurance, global SIM cards
- Medical kits and other pre-departure support



WHY STUDY IN THE UK

ACADEMIC EXCELLENCE

The UK offers globally respected education through 160+ institutions, known for academic rigor and international recognition.

FASTER DEGREES

With 3-year bachelor's and 1-year master's programs, students graduate sooner and enter the workforce faster.



TOP GLOBAL RANKINGS

Home to 17+ QS Top 100 universities, the UK leads in research impact, innovation, and industry collaboration.

WORK & FINANCIAL SUPPORT

Students can work up to 20 hours per week during term time, supported by scholarships and funding options to ease study costs.

START DATE

Fall: September / October

Spring: January/February

Summer Intake: April/May

FINANCIAL OVERVIEW

TUITION FEES



Foundation program
£10,000 - £20,000 / p.a.
(₹11L - ₹23L)

Bachelor's
£15,000 - £35,000 / p.a.
(₹17L - ₹41L)

Master's
£15,000 - £40,000 / p.a.
(₹17L - ₹47L)

LIVING EXPENSES



Inner London
£1200 avg/month
(₹1.45L)

Outer London
£1000 avg/month.
(₹1.69L)

Annually
Approx. £15000 / p.a.
(₹18L)

ACCOMMODATION



On Campus
£280 to £720 / month
(₹32K - ₹84K)

Off Campus
£120 to £700 / month
(₹14K - ₹82K)

Homestay
£900- 950 / month
(₹1L - ₹1.1L)

*Exchange rates are subject to market fluctuations, please confirm the prevailing rate before transaction.

ADMISSION TEST EXAMINATIONS

IELTS	TOEFL	SAT	GMAT
All international students (UG & PG)	All international students (UG & PG)	Some UG applicants	Required for some MBA and PG programs
Required Score 6.5-7.5	Required Score 90-105	Required Score 1250	Required Score 550
Good Score 6.5-7.5	Good Score 90-110	Good Score 1200-1400	Good Score 600-680

EMPLOYMENT DURING & AFTER

CATEGORY	DETAILS
During Term Time	Up to 20 hours/week for degree-level students
During Vacations	Up to 40 hours/week (full-time allowed)
Internships	Allowed; may be paid if related to course
After Study	2 years for UG & PG graduates, 3 years for PhD/Doctoral graduates
Short Courses (≤6 months)	Not eligible for part-time work or visa extension

FAQ'S

Can I get to study in the UK without IELTS?

- Yes, some universities do offer a waiver and some universities also accept PTE and TOEFL.

How can I get started on my study abroad journey in the UK?

- You can get in touch with Edwise's expert counselors who after reviewing your profile, would be in a better position to guide you according to your specific needs. As the premier study in UK consultants we guarantee a smooth and seamless process if you choose to study in the UK.

What are the benefits of studying in the UK for international students?

- Study in UK for overseas students provides them with access to top-tier universities, varied cultural encounters, as well as outstanding employment prospects via robust international networks.

Can I apply for multiple scholarships to study in the UK?

- Yes, you can apply for multiple UK scholarships, provided you fulfill the eligibility criteria for each one.

SCHOLARSHIP



Government Scholarships

- **GREAT Scholarships:** For students from select countries, including India.
- **Commonwealth Scholarships:** Covers tuition, airfare, living costs for Commonwealth postgraduates.
- **Chevening Scholarships:** Fully funded one-year master's for future leaders.

University-Specific Scholarships

- **Partial Tuition Fee Waivers:** Discounted tuition fees, usually based on academic merit or financial need.
- **Full Scholarships:** Covers both tuition and living expenses; these are highly competitive.

Student Name	University	Scholarship Amount	INR
Dhaval Pratap Parmar	University of Manchester	£ 35,000	₹ 42,50,120
Eshita Jain	University of Birmingham	£ 26,000	₹ 31,57,232
Jyoti Moti Ram Sharma	University of Surrey	£ 24,900	₹ 30,23,656
Siddhant	Cranfield University	£ 20,321	₹ 24,05,585
David Ebishawn Jayaraj	University of Liverpool	£ 15,000	₹ 18,21,480
Agnes Babu	University of Warwick	£ 14,957	₹ 18,16,258
Sannidhi Bhootra	University of Glasgow	£ 13,000	₹ 15,78,616
Vani Goyal	University of Loughborough	£ 12,800	₹ 15,54,329
Srajan Agrawal	University of Leeds	£ 11,500	₹ 14,02,539
Gautami Shrimal	University of Southampton	£ 11,500	₹ 13,96,468
Arun	University of Southampton	£ 11,550	₹ 13,96,468
Avani Despande	Lancaster University	£ 11,000	₹ 13,35,752
Priya Keerthana	University of Glasgow	£ 10,000	₹ 12,14,320
Clyde	University of Glasgow	£ 10,000	₹ 12,14,320
Abhishek Oswal	University of Leeds	£ 10,000	₹ 12,14,320
Vishwek Shah	University of Nottingham	£ 8,460	₹ 10,27,314
Aarya Shetal Shah	University of Manchester	£ 8,000	₹ 9,71,456
Sunaina Bhunia	University of Aberdeen	£ 8,000	₹ 9,71,456
Atul	University of Aberdeen	£ 8,000	₹ 9,71,456
Akash	University of Strathclyde	£ 8,000	₹ 9,71,456
Balaji	University of Southampton	£ 8,000	₹ 9,71,456
Praveen	University of Strathclyde	£ 8,000	₹ 9,71,456
Siddhi Gharat	Queen's University Belfast	£ 7,500	₹ 9,10,740
Arpita	University of Exeter	£ 7,000	₹ 8,50,024

* Exchange rates as of 23rd December, 2025

UNIVERSITY TESTIMONIALS

AMY WILLIAMS

The University of Exeter, UK

"The University of Exeter is proud to have partnered with Edwise for over a decade. Edwise provide professional, warm support to students exploring UK study options. Their counsellors are experienced with admissions, visas and studying at Exeter across all levels. We look forward to welcoming more Edwise-supported students."



RUSSELL WILLIAMS

Aberdeen University, UK

"Edwise International have been a trusted partner supporting the University of Aberdeen's recruitment of Indian students for over two decades. I've visited many of their offices and fairs, and found their team professional, well-informed, and committed to matching students' interests with suitable programmes. Their expertise ensures they remain key to our international recruitment."

SHIVANI BHALLA

Brunel University of London, UK

"I've worked with Edwise for 15 years, and our partnership has gone from strength to strength. With their support, Brunel has welcomed some of our brightest Indian students. Their counsellors are ethical, knowledgeable, and genuinely student-focused. It's a trusted relationship I truly value."



STUDENT TESTIMONIALS

"Edwise helped shaped my career in a stronger way. Trupti helped choose the right university and course. Also, Edwise helped me in clearing IELTS exam. Overall, I suggest upcoming students to speak more to Edwise counsellors and understand each university requirements for the course they looking at. Thank you."

Archita Shah

University of Manchester, UK



"All my dreams have come true and this would'nt have been possible without edwise. It is not only a counseling service but also an all rounder provider of 24 / 7 student support, both mentally and physically. I am lucky enough to find an institute which does every possible thing to make a student's dream come true."

Umang Malik

University of Manchester, UK

"I would highly recommend Edwise for all your visa related queries and process. I was given proper guidance by Sr. Visa Officer sir. he addressed all my queries and made sure that my visa process happens smoothly."

Radhika Rathi

University of Warwick, UK



LIST OF UNIVERSITY PARTNERS

Aberystwyth University
 Abertay University
 Amity University London
 Arts University Bournemouth
 Arden university
 Aston University
 Bangor University
 Bath Spa University
 BIMM Institute
 Bournemouth University
 Brunel University
 Canterbury Christ Church University
 Cardiff University
 Cardiff Metropolitan University
 City St.Georges University of London
 City University of London
 Coventry University
 Cranfield University
 De Montfort University
 Durham University
 ECA
 Edinburgh Napier University
 Falmouth University
 Glasgow Caledonian University
 Henley Business School
 Heriot-Watt University
 Hult International Business School
 Istituto Marangoni
 Keele University
 Kings College London
 Kingston University
 Lancaster University
 Le Cordon Bleu
 Leeds Art University
 Leeds Beckett University
 Liverpool Hope University
 London School of Business & Finance
 London South Bank University
 Loughborough University
 Manchester Metropolitan University
 MET Film School
 Middlesex University
 Napier University
 Newcastle University
 Northeastern University
 Nottingham Trent University
 Oxford Brookes University
 QA Higher Education
 Queen Margaret University
 Queen Mary University of London
 Queen's University Belfast
 Regents University London
 Richmond The American Int. Uni. in London

Robert Gordon University
 Roehampton University
 Royal Agriculture University
 Royal Holloway University of London
 School of Oriental and African Studies
 Sheffield Hallam University
 SP Jain University
 Staffordshire University
 Swansea University
 TEDI-London
 Teesside University
 The London Film School
 The University of Law
 The University of Northumbria at New
 Castle
 UA92
 University College Birmingham
 University of Arts London*
 University of Aberdeen
 University of Bedfordshire
 University of Birmingham
 University of Birkbeck
 University of Buckingham
 University of Bolton
 University of Bradford
 University of Brighton
 University of Bristol
 University of Chester
 University of Chichester
 University of College Birmingham
 University of Derby
 University of Dundee
 University of Edinburgh
 University of Essex
 University of Exeter
 University of Glasgow
 University of Gloucestershire
 University of Greenwich
 University of Hertfordshire
 University of Huddersfield
 University of Kent
 University of Leeds
 University of Leicester
 University of Lincoln
 University of Liverpool
 University of Manchester*
 University of Northampton
 University of Nottingham
 University of Plymouth
 University of Reading
 University of Salford
 University of Sheffield

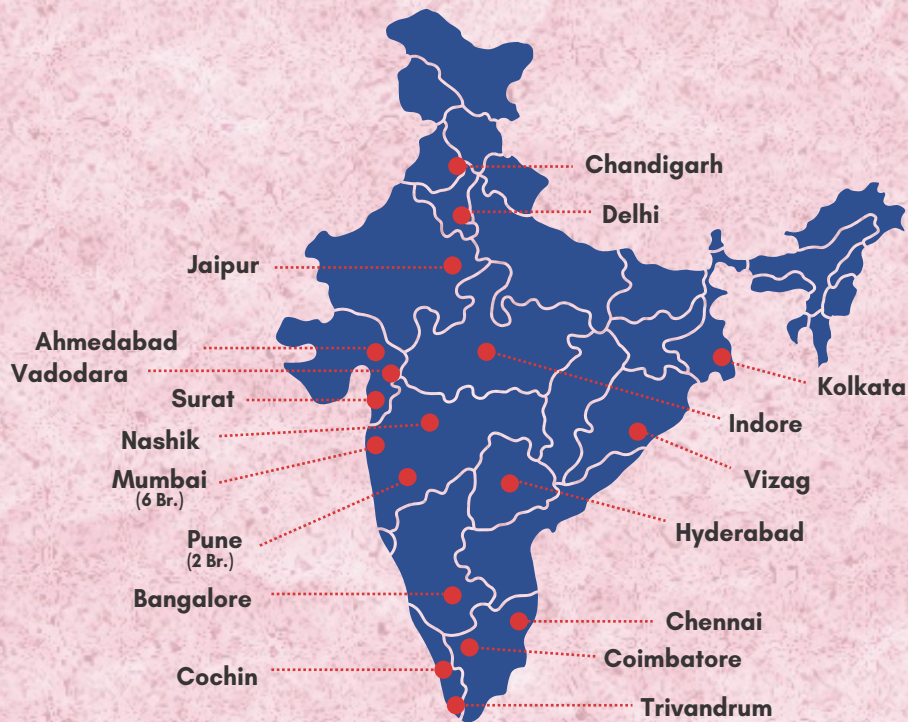
University of Southampton
 University of South Wales
 University of Stirling
 University of Strathclyde
 University of Sussex
 University of Surrey
 University for The Creative Arts
 University of Ulster
 University of The West of Scotland
 University of West of England, Bristol
 University of Wales Trinity Saint David
 University of West London
 University of Westminster
 University of Winchester
 University of York



We Counsel and Help Students with Applications for Institutions not listed above

Edwise officially represents leading universities and offers personalized guidance for every student—across destinations, courses, and levels of study. Our directors and counsellors bring global study and work experience, with over 100 years of combined expertise in overseas education. Trained by international experts, our team provides individual attention and professional support to help you choose the right course at the ideal university.

OUR OFFICES IN INDIA



@edwiseinternational



@edwiseint



edwise international



edwise_int



@edwiseinternationalstudyabroad



All Destination Brochures



Instant Counseling



Find Branch Near You

MUMBAI HEAD OFFICE :

2, Sethna Building, 1st Floor, 216, Princess Street, Near Parsi Dairy Farm, Marine Lines, Mumbai - 400 002. Tel.: +91 22 40813456 / 7700094897 | ho@edwiseinternational.com



+91 8600911333 | www.edwiseinternational.com

